

KRAEMER

MFG

Shop online at our New
Online WEB-Store

"EP" TYPE DUST COLLECTORS

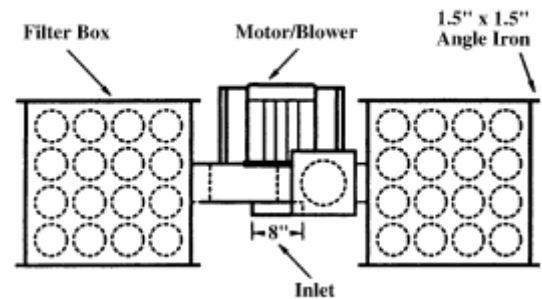
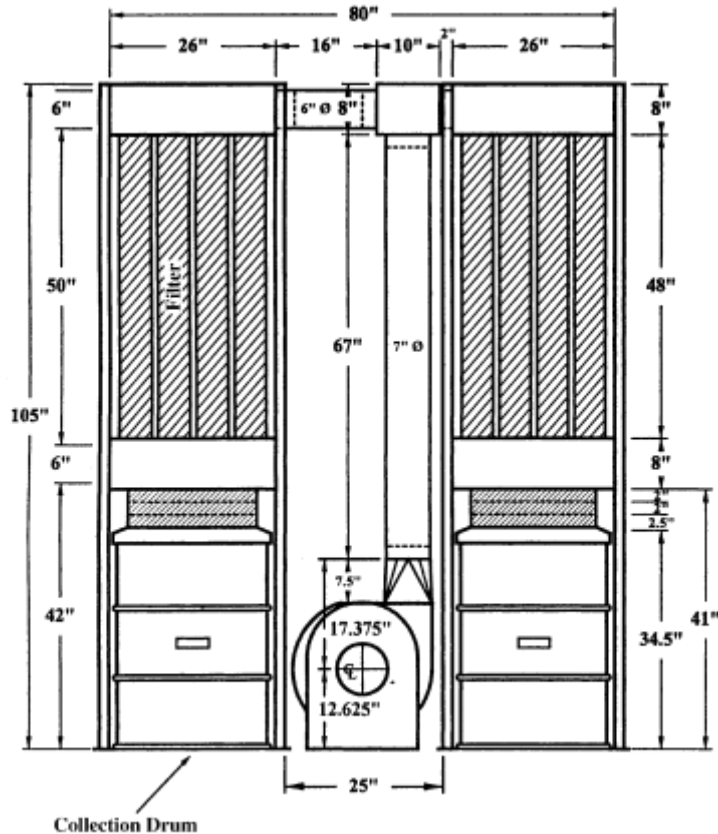
KRAEMER EP 5-32
Dust Collector

- For very fine dust
- Compact design
- Very high efficiency
- For inside use only
- Quiet operation
- Silencer available (not included)
- Comes in 5 hp, 3 phase voltage
- Dust-tight magnetic switch is available
- Collector has 32 filter bags 5" dia. x 48" long with 2 snap rings
- For Wood, Metal, Plastic, Foodstuff, Paper etc.



- Special filter bags, Polyester needle felt with acrylic coating, are available (at extra cost)
- Collector moves 2137 cfm at 1" sp. with a 5 hp high efficiency motor, 3450 rpm, TEFC
- All Steel construction, very sturdy, epoxy coated over epoxy primer
- Single phase units available (at extra cost)
- Louvered Side Panels available
- Fan wall mount available

"EP" TYPE DUST COLLECTOR



General Specifications

- Free standing
- Structural steel legs
- All Steel construction
- Prime and finish painted epoxy
- Blower with 5 hp motor, TEFC
- (2) drums with lids, 45 Imperial gallons
- Flexible drum sleeves with gear clamps
- (32) Polyester filters, 5" dia. x 48"

note:

- Listed dimensions are for reference only
- We reserve the right to make technical improvements without prior notice
- Our products are covered by a 12 month (1-Year) warranty against defects in workmanship or materials.
- Motors, Impellers and filters are excluded.

Materials List:

- (32) Filters, 5" dia. x 48" long
- (2) Bottom filter boxes, 26" x 26" x 8"
- (2) Top filter boxes, 26" x 26" x 8"
- (8) Angle iron legs, 1 1/2" x 1 1/2" x 105" long
- (2) Drums, 45 gal.
- (2) Reducing drum lids, 24" – 20" dia.
- (2) Nylon sleeves, 20" dia. x 6" long
- (4) Gear clamps, 20" dia.
- (1) Motor/blower, 5 hp
- (1) Square-to-round, 7 1/2" high
- (1) Spiral pipe, 7" dia. x 67" long
- (1) Spiral pipe, 6" dia. x 16" long
- (1) Diverter box, 7" inlet with (2) 6" outlets
- (1) Electric switch, 5 hp

Distributed by:



KRAEMER MFG.

1202 Barton Street, Stoney Creek, Ontario Canada L8E 5G9
 1-800-443-6443 Fax: 1-866-229-5792
www.kraermfg.com